

VHZ 600/800/1100

Vecoplan®

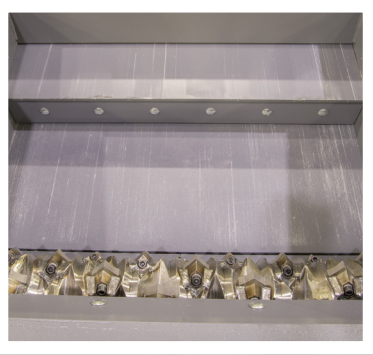
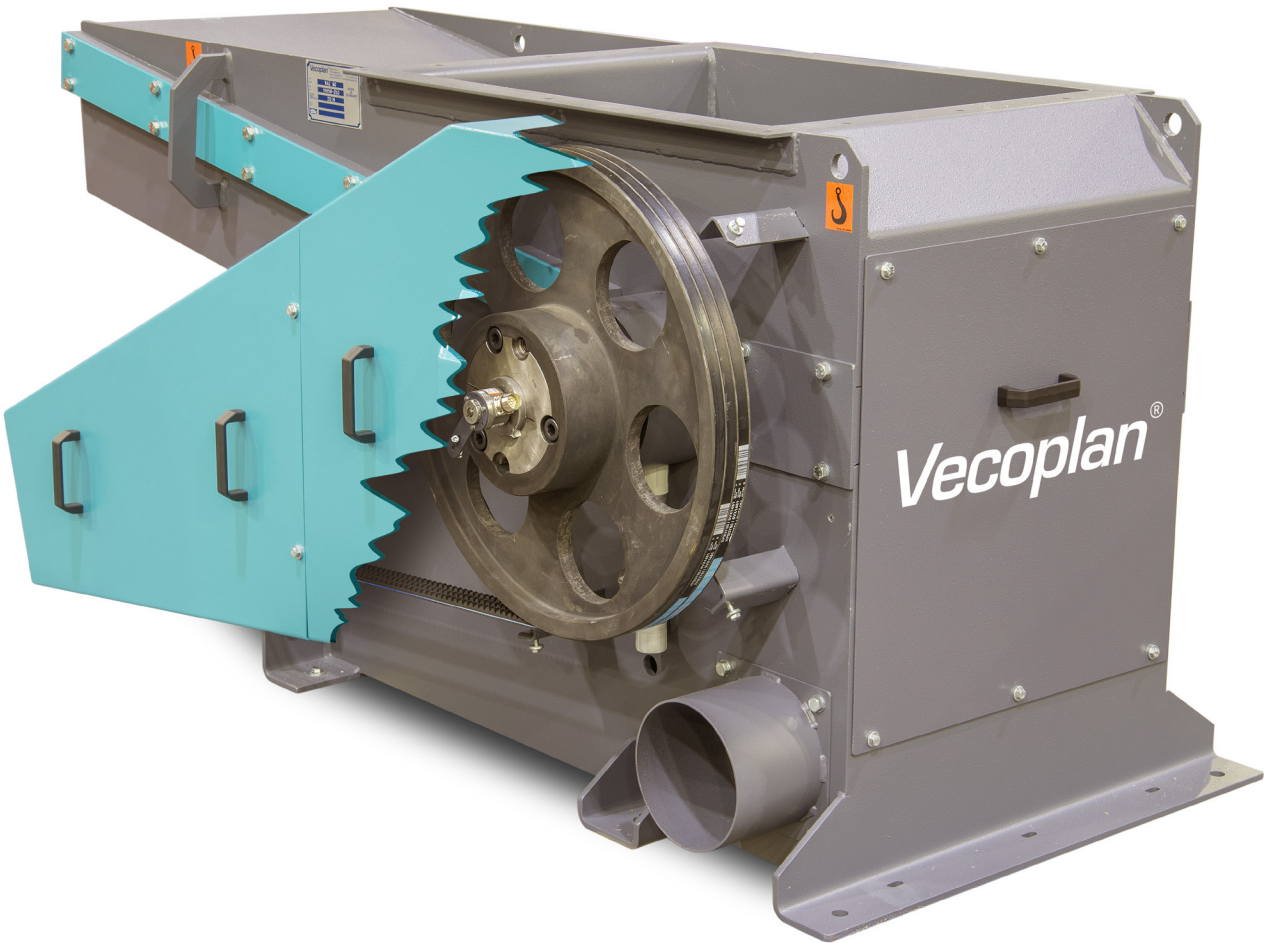


Energy Efficient Wood Shredding

The small series VHZ is a durable and robust shredding solution specifically developed for the needs of the wood processing industry. Woodworkers around the globe benefit from the reliable shredding components, which set new standards for energy efficiency. Thanks to our patented gearless variable-speed drive technology, the VAZ series is designed to ensure minimal operating costs and maximum production.

Small but mighty - VHZ Series 600/800/1100

Double the throughput of similarly sized machines



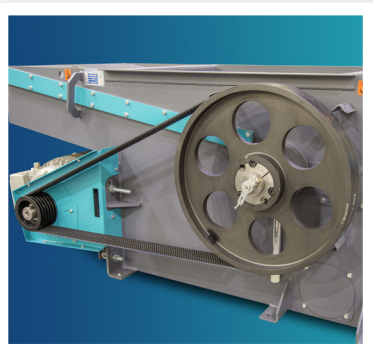
RAM

- Optimum ram geometry
- Hydraulic material supply
- Self adjusting and spring loaded ram sealing



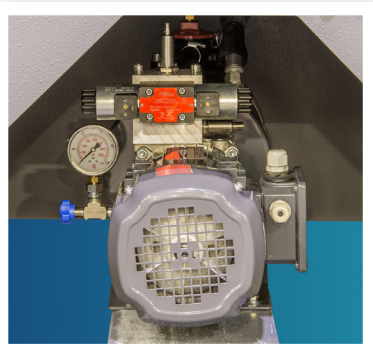
CONTROL CABINET

- Touch screen UL panel is standard
- Efficient and innovative control with automatic performance adjustment (material detection)
- No peak currents
- Plug-and-play installation



ESC DRIVE

- Main drive with frequency converter, for adjustable rotor speed from 90 to 250 RPM
- Low energy consumption
- High drive dynamica thanks to very fast reversing and re-start
- Drive belt slip control
- Foreign material detection



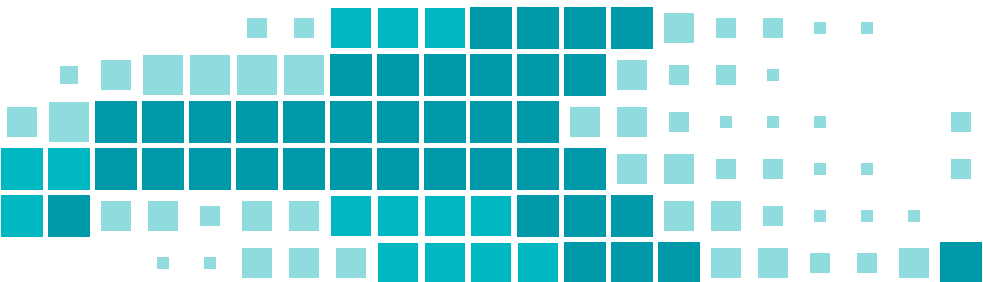
HYDRAULICS

- Compact hydraulic unit integrated in the machine support frame
- The slide out hydraulic assembly is under the machine and 'out of harms way' during normal operation, but can be slid out on the included guide rails to allow for much easier access to perform maintenance when required.

The single-shaft shredder VAZ is compact and universally designed for a wide range of waste-wood applications. For five decades, Vecoplan has been a reliable global partner for efficient and cost-effective shredding solutions. Thanks to decades of hands-on experience, Vecoplan has developed this robust machine in a compact design which is easy to use and has an energy-efficient profile. This machine is appreciated by joiners and carpenters in particular.

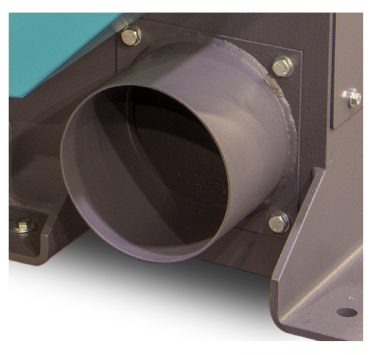
The patented ESC Drive® (Electronic Slip Control) removes the need for a gearbox, which is energy efficient, cost effective and very reliable. The ESC drive gives you 2-3 times the rotor RPM and thus 2-3 times the capacity of other similarly sized machines.

A VFD is standard on every machine giving you the most energy efficient solution available right out of the box. The VFD gives you the ability to increase the capacity of your machine as your business grows.



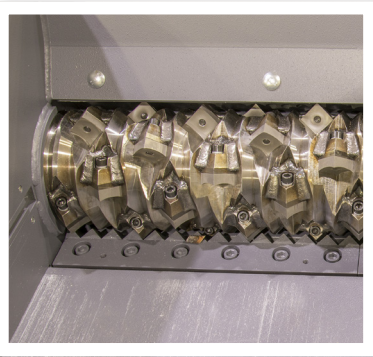
DISCHARGE

- Built in pneumatic conveying port. Can be adapted to work with a screw or belt conveyor if required.



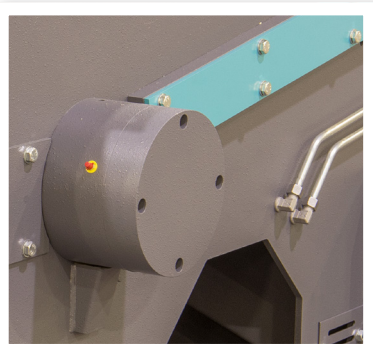
ROTOR / CUTTING UNIT

- Patented, profiled rotor for efficient shredding
- Easy-to-change profiled counter knife



BEARINGS

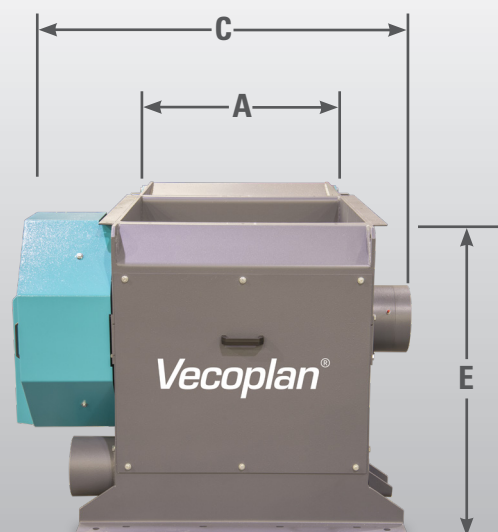
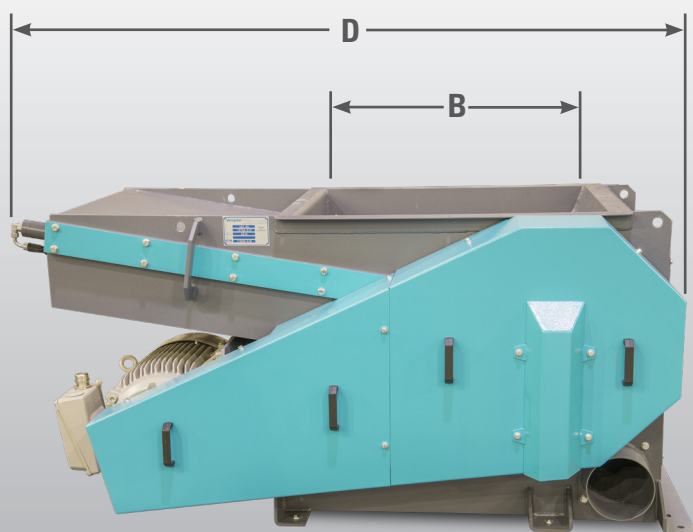
- Oversized outboard, double-spherical tapered roller bearings in solid steel housings



PLUG AND PLAY

- Control panel secured to the shredder for easy transport
- Factory pre-wired and supplied with brackets for wall mounting - just bring power to the panel.





DETAILS		VHZ 600	VHZ 800	VHZ 1100	VHZ 1100 XL
Motor HP	HP	25	30	40	60
Hopper opening	inch	50 x 55	58 x 60	65 x 60	65 x 70
Cutting chamber	AxB inch	25 x 32	32 x 37	42 x 37	42 x 47
Capacity*	lbs/hr	3,500	5,000	6,000	7,000
Rotor length	inch	25	32	42	42
Rotor diameter	inch	10	10	10	15
Number of cutters	pcs.	28	40	54	54
Rotor RPM	rpm	Variable - from 90 to 250			90 to 265
Max cuts per minute	num.	7,000	10,000	13,500	14,310
Width	C inch	46	53	64	67
Length	D inch	78	92	92	105
Height**	E inch	39	38	36	45

* Capacity based upon typical shop mix of particleboard, MDF, hard & soft woods through a 1" screen

** Machine height only. Please add 40" to allow for the height of the standard infeed hopper.

PRESENTED BY



MISENHEIMER INC.

Contact Mike Wilhoit

336-840-4328

Mikew@misenheimerinc.com
www.misenheimerinc.com